

JANUARY 2012

Surrey Beekeepers Association

CROYDON DIVISION

Chairman Mark Stott 0208 684 1098
Treasurer Tamar Cavett 0208 406 9258
Secretary Joyce Atkinson 0208 657 2817

www.croydonbeekeepers.co.uk



...and a
Happy New Year

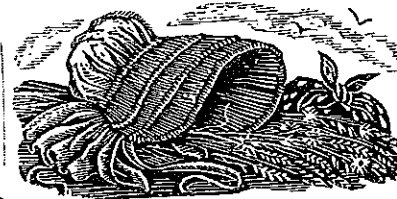
COMING EVENTS

FRIDAY 20 th. JANUARY 2012 at 7-30 p.m.
(not the 2 nd. as printed in the last edition; E-mail copies were corrected, apologies)
PRODUCTS OF THE HIVE - practical advise on their production and use.

A talk by Michelle Taylor
AT Warlingham Methodist Church Hall, CR6 9HA

SATURDAY 18 th. FEBRUARY 2012
SURREY BEE DAY

at Ewell Castle School, Ewell.
Advance bookings to Sandra Rickwood - 01932 244326
for this all day event - no details to hand as yet for this popular occasion.



SATURDAY 3 rd. MARCH 2012
SURREY BKA TRAINING DAY

(not the 4 th. February as in the last edition - a change of plan!)
again no details to hand yet - but it will be at
Whitgift Trinity School, Addiscombe, so handy for us.

FRIDAY 23 rd. March 2012 at 7-30 p.m.
TIPS and ADVISE on PREPARATION for HONEY SHOWING

A talk by Peter Bashford
AT Warlingham Methodist Church Hall, CR6 9HA

REPORT

The Surrey BKA annual general meeting held early last month was attended by six of our members including our chairman and his report on our activities for last year is with this newsletter so those of you who are not so actively involved in our division's affairs may know what went on - perhaps what they missed too!

The meeting was held in the Tilford Institute, a fine Lutyens building overlooking a cricket pitch and a good pub on the far side of the green, a pleasant part of our host, Farnham BKA 's division

BOOKS

Last month's edition had a list of our divisional holding for members to borrow but our librarian tells me that he has made no loans, some of our books are not very recent but not much has changed so please try one!



MAGAZINES

Some members may find Beecraft and BBKA News, both of which we receive as part of our subscription are enough to keep up to date - if not as Surrey members the Beekeepers Quarterly is available at a reduced rate of £16-00 p.a. (normal price £24-00 p.a.)
 Orders to Malcolm Clarke, 'Firways', Row Lane, Shere, Guildford, GU5 9JW

The CENTRAL ASSOCIATION of BEE-KEEPERS
 In case you are interested with this newsletter is a copy of their book list.

The FOOD and ENVIRONMENT AGENCY

I have copies from this agency of:

NOTES from the SE Region Associations Day 6 th. September 2011

This was attended by our chairman, Mark Stott.

REVIEW of the 2011 season by the SE region of the National Bee Unit.

SURVEY of honey for the South East 2011

If you would like a copy of any of these let me know, the Honey Survey is of yields and prices realised for bulk, wholesale and direct both for our region and nationally, also for cut comb; average direct sale of flower honey for the SE was £4-70p/lb.

PESTS - LARGE and SMALL



THE GREEN WOODPECKER.

The large one - may strike if we have a hard frost or snow and it has a taste for bees so pecks a hole in a hive to get a meal - protect your hives with loose net or chicken wire now!

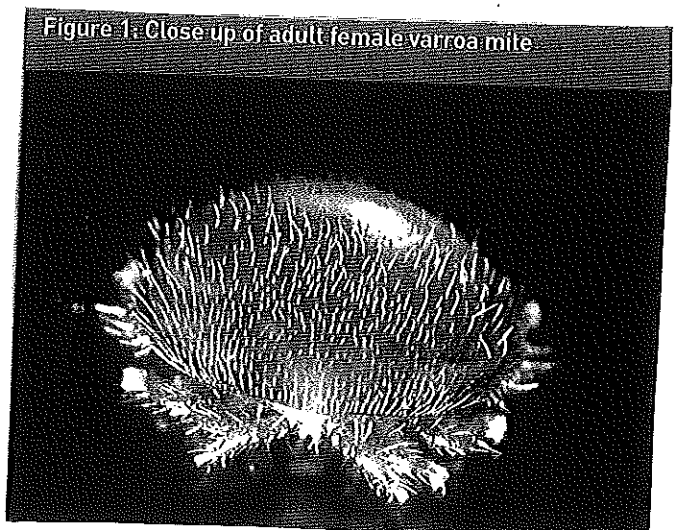
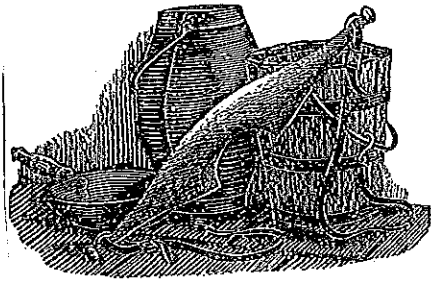


Figure 1: Close up of adult female varroa mite

Much smaller - if you have a floor tray and find many mites on it now is the time - when there is no brood to treat with Oxalic acid - if you are not sure how to do this ask for advice; there have been several articles on this in Beecraft and BBKA news.



Chairman's Report

Winter meetings

Early in the year we hosted talks on beekeeping and related subjects. These were well attended by members. The talk on 'Bees in the garden' was particularly well attended with the addition of guests from the local Horticultural Society.

For those interested in developing their beekeeping knowledge further we have a winter study group that meets once a month. Three members of that group went on to successfully passed BBKA modules.

In the early spring we had a foulbrood workshop led by the Regional Bee Inspector Alan Byham.

Teaching Apiary

Our Apiary meeting started in April and ran through to the end of September. These are well attended by both beginners and more experienced members. Our Apiary Manager, David Shepard led the beginners group starting each session with a short presentation based on the CIC followed by practical instruction round the beehives.

A second group studying for the BBKA Basic met both at the apiary and in the evenings. Following this six people successfully passed their Basic exam. The remaining members worked in small groups helping with the hive inspections. The honey crop was slightly lower than the previous year, which is attributed partly to the weather and partly to the increased use of the hives for teaching and taking the observation hive out to talks and shows during the summer. The number of hives in the teaching apiary was also increased.

Thanks to the hard work by the Apiary Manager, and others, our Teaching Apiary is generally in good condition. We have also been able to replace some of the older equipment. However there are concerns regarding the condition of the sheds and we need to start planning the replacements soon.

Member's hives

Due to the shortage of space at our main teaching apiary we have opened a second Apiary on the North side of Croydon. This is available for use by members who are either unable keep hives at home, or just prefer the social benefits of working along side other beekeepers.

	Nectar & Foraging	
Carreck, N.L.	Reduction in forage for pollinators and possible remedies.	2001
Hopkinson, G.	Trees, shrubs and bees.	2000
Roberts, P.	Analysis of Welsh nectar sources.	1999
Willmer, Dr P.	Insect activity patterns: why, when and where do bees forage?	1985
	Pesticides & Agriculture	
Thompson, Dr H.M.	Pesticides and honey bees.	2000
Winfield, A.L.	Changes in modern agriculture.	1985
Winfield, A.L.	Cropping and spraying 1888 -1988.	1988
	Pheromones & Insect Hormones	
Pickett, Dr J.A.	Honey bee pheromones: some recent developments in controlling honey bee behaviour.	1986
	Plants & Insects	
Gilbert, Dr F.S.	Insect-plant coevolution in the mountains of Sinai.	1999
Harvey, Peter	Why brownfield sites are important for invertebrates.	2004
	Pollen & Pollination	
Cresswell, Dr J.E.	Bees as pollinators: how far does pollen go?	1997
Elleman, Dr C.J.	Pollination: after the bee's visit.	1992
Ghazoul, Dr J.	Plant-plant interactions and pollinator facilitation.	2006
Harley, Dr M.M.	Pollen - all packed up and ready to go.	2004
Jacobs, Jennifer H.	The birds and the bees: do insect pollinators affect hedgerow fruit set & abundance of frugiverous birds on farmland?	2008
Moore, Dr P.D.	Prehistoric pollen: reading the pollen archives.	1990
Osborne, Dr Juliet L.	Pollinator management: matching bees and flowers.	1996
Williams, Prof. I.H.	Modelling bee-mediated gene flow from genetically modified plants.	2001
Williams, Prof. I.H.	Research into the pollination of alternative crops at Rothamsted.	1991
	Senses, Flight & Navigation	
Cooter, Dr R.J.	The flight potential of insect pests and its estimation in the laboratory: techniques, limitations and insights.	1993
Kuterbach, Dr D.	Do bees have a magnetic sense?	1987
Pye, Prof. J.D.	Flower patterns and blue skies.	1992
Wooton, Dr R.J.	Insects: the ultimate sailing machines.	1987
	Social Behaviour	
Davis, C.F.	Organisation of colony reproduction in the honey bee.	2003
Franks, Dr N.R.	Distributed intelligence: the case of the social insects.	1992
Hart, Dr A.G.	Information use and improvement in the honey bee.	2001
Howes, Dr P.E.	Communication in social insects.	1990
Williams, John	Darwin's Bees	2009
	Medical Aspects of Beekeeping	
Riches, Dr H.R.C.	Medical aspects of beekeeping.	2004
Riches, Dr H.R.C.	Recent problems in the treatment of bee venom allergy.	1990
Voaden, J.	An exploration of the public health challenges posed by honey bees and beekeeping in the UK.	2004
	Bibliography	
Bushby, A.B.	Golden Jubilee bibliography.	1995

Booklets are priced as follows: 1985-1989: £1; 1990-1999: £1.50 (£1 to CABK members); 2000-2011: £2.50 (£2).

Postage & packing: 1 bklet 50p; 2-3 bklets 80p; 4-5 bklets 90p; 6-7 bklets £1.

Order by post, with cheque payable to The Central Association of Bee-Keepers,

to: CABK Sales Secretary

Tighnabruach, Taybridge Terrace, Aberfeldy, Perthshire PH15 2BS

<http://www.cabk.org.uk>

Registered Charity Number: 278710

National average figures

Below are figures from other regions for comparison. These regions are the administrative regions of the National Bee Unit as shown here and can also be found on the NBU website: www.nationalbeeunit.com



Region	Flower Wholesale £/lb	Flower Direct Sales £/lb	Flower Bulk Sales £/lb	Cut comb £/lb	Maincrop yield (lb)
Western	£3.18	£4.09	£2.45	n/a	55
Wales	£4.00	£5.50	£2.50	£9.00	42
Northern	£3.93	£4.30	£2.66	£10.09	37
South East	£4.01	£4.70	£3.28	£8.92	31
Southern	£3.50	£4.50	£2.20	£8.00	59
Eastern	£3.20	£4.00	£2.20	£6.00	40
South West	£4.00	£4.77	£2.50	£7.73	44
North East	£3.63	£4.25	£2.74	£6.85	57
Average	£3.68	£4.51	£2.75	£8.08	46

The SE average honey price, £4.70 is above the national average honey price of £4.51 but by no means is it the most expensive, which at £5.50 shows what the market can stand. The average maincrop yield figures indicate that the SE had by far the poorest average honey crop of all the regions.

Approximate total honey production in England and Wales:

Number of beekeepers registered to Beebase	25000
Estimate of 'unknown' beekeepers say 25%	6250
Total Beekeepers	31250
Beebase average colonies per beekeeper	5.07
Total number of colonies 31250 x 5.07	158437
Total honey crop 158437 x 46lbs	3254Tons

Alan Byham
S.E. Regional Bee Inspector
National Bee Unit
Tel: 01306 611016
Email: alan.byham@fera.gsi.gov.uk

Website: www.nationalbeeunit.co.uk

KINGSTON BEEKEEPERS ASSOCIATION

MODULE 2

COURSE

Tuesday 17th January 2012

for eight weeks

7 - 9pm

Held at Kingston Grammar

Sports Ground

Thames Ditton KT7 0RD

Turn left into Summer Road when coming from the Hampton Court Roundabout, over the level crossing and first on the left.

An introduction to Module 2 is interesting as it covers honeybee products and forage. The syllabus and suggested reading list is on the BBKA website. It is an opportunity to extend your knowledge of how to harvest your honey crop and present a saleable product.

To sit the actual examination you must have passed the basic assessment and be prepared to study and practise past papers. However, if you consider that examinations belong to your past life and have no wish to ever stress yourself out in this way again, this is still an excellent opportunity to extend your knowledge of beekeeping and while away a few winter evenings. On March 13th there will be a revision evening and the exam is on Saturday, 24th March.

There is no pressure to actually sit the examination.

Cost of the Course £40.

To apply please contact our

Membership Secretary, at

<http://www.kingstonbeekeepers.org.uk/contact-us>



The Central Association of Bee-Keepers
Bringing Science to the Beekeeper

↪ Autumn 2011 Update ↪

Members and non-members welcome at all events

Look out for details of events on the website - www.cabk.org.uk. Booking forms can be downloaded from there, or picked up at our National Honey Show stand.

Social Evening

Thursday 27th October
6.30pm

Venue: as National Honey Show - St George's College, Weybridge, Surrey

Speaker: Tom Sealey
'Honey Bee Democracy'

Lecture will be followed by a finger buffet with wine or soft drinks.

Stratford Conference

25th - 27th November

Venue: Legacy Falcon Hotel, Stratford-upon-Avon

Seven lectures at a leisurely pace, from Friday evening to Sunday lunchtime.

Good food and a great opportunity to meet up and catch up.

And next year...

Spring Meeting 2012

Saturday 31st March

Venue: Roots and Shoots, Walnut Tree Walk, Lambeth

Three lectures followed by the CABK Annual General Meeting.

The lecture programme and AGM are free.

A delicious vegetarian lunch can be pre-booked at a modest cost.

The Central Association of Bee-Keepers...

...enables beekeepers and others interested in bees and other social insects to keep in touch with the latest research and ideas about bees and related topics. It acts as a bridge between the beekeeper and the scientist. We invite as our speakers those who are acknowledged experts in their fields.

We publish and distribute free to members a selection of the lectures given to the association. When you first join you will receive the latest three booklets.

The CABK is a specialist member of the BBKA. Most members also belong to their local beekeeping associations, and our role is complementary to these.

Pat Allen, Secretary
01708 220897
pat.allen@prconnect.com

John Hendrie, Treasurer
01732 833894
bibbaz26@talktalk.net